

## About This Quickstart/What's New Guide

While the manual is a good resource, we recommend checking out the videos on Transcriptive to really get an understanding of how it works. Often it's easier to show something than to try to explain it with words, especially with something that's visual to begin with.

However, it can be hard to go into lots of detail in a video, so this manual usually provides more info than you'll find in the tutorial videos. The videos and manual are designed to complement each other.

Here are the tutorial videos, they're all around 5 minutes or so:

Transcriptive Rough Cutter Tutorials:

<https://digitalanarchy.com/transcribe-video/premiere/tutes.html>

Transcriptive Web App Tutorials:

<https://digitalanarchy.com/transcribe-video/app/tutes.html>

PowerSearch Tutorials

<https://digitalanarchy.com/premiere-search/tutes.html>

PowerSearch is included with your purchase and your serial number will activate it. However, it's a separate download. You can get it by going to our Demo pages.

[https://digitalanarchy.com/demos/psd\\_win.html#d12](https://digitalanarchy.com/demos/psd_win.html#d12) (Windows)

[https://digitalanarchy.com/demos/psd\\_mac.html#d12](https://digitalanarchy.com/demos/psd_mac.html#d12) (Mac)

## Installation

You can always download the most up-to-date version of Transcriptive from our Demo page. Your serial number will activate the demo.

### Mac Demo:

[https://digitalanarchy.com/demos/psd\\_mac.html#d11](https://digitalanarchy.com/demos/psd_mac.html#d11)

Download the .dmg file and run the Installer that's on the dmg.

This will install the Transcriptive panel and associated files into:  
Macintosh HD/Library/Application Support/Adobe/CEP/

It will also install the FLAC exporter into:

Macintosh HD/Library/Application Support/Adobe/Common/Plugins/7.0/MediaCore/Digital Anarchy

Once the installer finishes, it'll bring up the Digital Anarchy Registration page. Please fill out the registration and close the installer.

Restart Premiere Pro and Transcriptive should show up in Premiere under Windows>Extensions>Transcriptive

If at some point you wish to uninstall Transcriptive completely (this is sometimes helpful in troubleshooting problems with a new version), run the Un-Installer.

### Windows Demo:

[https://digitalanarchy.com/demos/psd\\_win.html#d11](https://digitalanarchy.com/demos/psd_win.html#d11)

Open the .zip file and launch the Transcriptive\_Installer.exe. If you are updating or upgrading, you'll be asked if you want to uninstall Transcriptive. Click OK to run the un-installer. (highly recommended)

Click through the installer, agreeing to the license terms. The installer will automatically select the correct directory, don't change this unless you have an unusual system and you know where the panel should go.

This will install the Transcriptive panel, Premiere Power Search panel and associated files into:  
C:\Program Files\Adobe\Adobe Premiere Pro CC 2017\CEP\extensions

It will also install the FLAC exporter into:

C:\Program Files\Adobe\Common\Plug-ins\7.0\MediaCore\Digital Anarchy

Once the installer finishes, it'll bring up the Digital Anarchy Registration page. Please fill out the registration and close the installer.

Restart Premiere Pro and Transcriptive should show up in Premiere under Windows>Extensions>Transcriptive

If at some point you wish to uninstall Transcriptive completely (this is sometimes helpful in troubleshooting problems with a new

## Licensing and Activating Transcriptive Rough Cutter

Licensing Transcriptive is significantly different than it was previously.

You can register the panel with your serial number or by logging in with your Transcriptive.com account. If you log in with your Transcriptive.com account, once you link a serial number to it, you don't need to remember the number. Just log in and you're good to go.

You can also deactivate other computers or manage all your licenses in one place.

Of course, if you have any problems with licensing, please email us at [cs@digitalanarchy.com](mailto:cs@digitalanarchy.com) or call 1-415-287-6069. Phone support is: 10a-5p PST, Mon-Fri. Email support is seven days a week.

Some problems can be solved by deleting the license file. This is located at:

Windows: C:\Users\Public\Documents\Digital Anarchy\Receipts

Mac: Main Hardrive\Users\Shared\Digital Anarchy\Receipts

### Trial Licenses

If you're just trying out Transcriptive Rough Cutter, you'll need to register to get a trial account. Just click on the 'Get Trial License' button that you see in the License dialog.

### Serial Number Setup

**Already have a Transcriptive license?**  
Login to link your serial# to your Transcriptive.com account below.

**Don't have a transcriptive.com account?** [Sign up](#)

Email

Password

[Reset Your Transcriptive Password](#)

**If you'd like a trial license:**

LICENSE

If you don't have an internet connection, please contact [cs@digitalanarchy.com](mailto:cs@digitalanarchy.com) for an activation key. Click Browse to install it.

[Click here to register using just your serial number.](#)

[Proxy setup](#)

This will give you a free trial with 30 minutes of free transcription. There are some limits, mainly that you can transcribe a maximum of two minutes at a time. If you'd like an unrestricted trial please email [sales@digitalanarchy.com](mailto:sales@digitalanarchy.com). We're happy to give you a week long trial with no limitations.

## Activating A Purchased License

When you launch Transcriptive for the first time, you'll see the same dialog above.

To license the plugin, you can either:

- 1) Enter the credentials for your Transcriptive.com account
- 2) Click on the 'Click here to register with just your serial number' link... this will let you enter your serial number and be on your way.

There are some advantages to #1. If you enter your Transcriptive.com credentials, you'll need to link your serial number to your account. You only need to do this once. After that you can log in anywhere and your license will follow you. It also makes it simple to re-license the plugin if it becomes unlicensed for any reason. (usually because it's been inactive for more than 30 days)

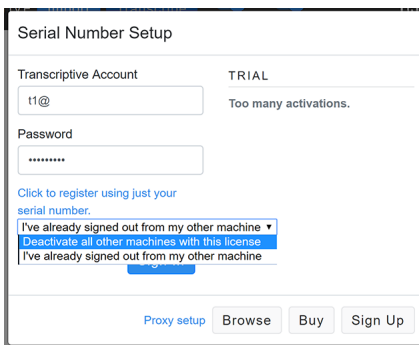
Just using your serial number is a bit faster initially, but in the long run, just logging into your account and not having to always find the serial number could be easier.

## Deactivating

The easiest way to do this, is to log out if you've licensed it by logging into your Transcriptive.com account. That will immediately unlicense the plugin.

You're allowed to install Transcriptive Rough Cutter on two computers. If you go over that and try to use a third computer, you'll get a message saying you've logged into too many computer and will need to deactivate them.

Just select 'Deactivate all other machines' and you'll be able to log in.



Serial Number Setup

Transcriptive Account: t1@ TRIAL Too many activations.

Password: \*\*\*\*\*

[Click to register using just your serial number.](#)

I've already signed out from my other machine ▾  
Deactivate all other machines with this license  
I've already signed out from my other machine

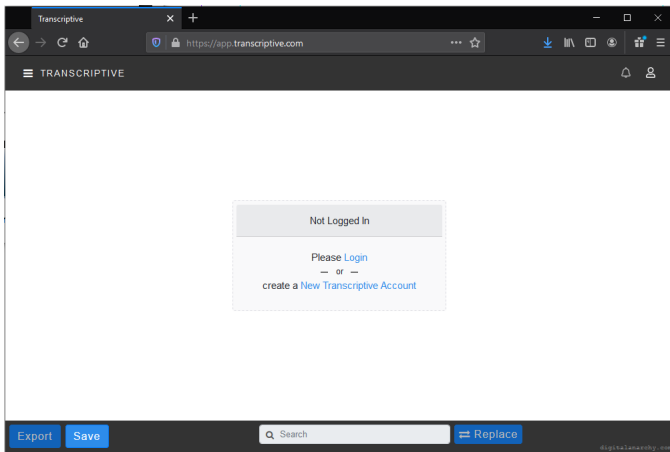
[Proxy setup](#) [Browse](#) [Buy](#) [Sign Up](#)

It's worth noting that you can INSTALL on two computer, but you can use them simultaneously (i.e. two people at two different computers). It's really designed for one user with, say, a laptop and desktop machine, where the machines won't be in use at the same time.

## Setting Up Your Transcription Account

You must set up an account on Transcriptive.com in order to transcribe. It's free but you need to enter in a credit card to cover the transcription costs (\$0.04-0.08/min).

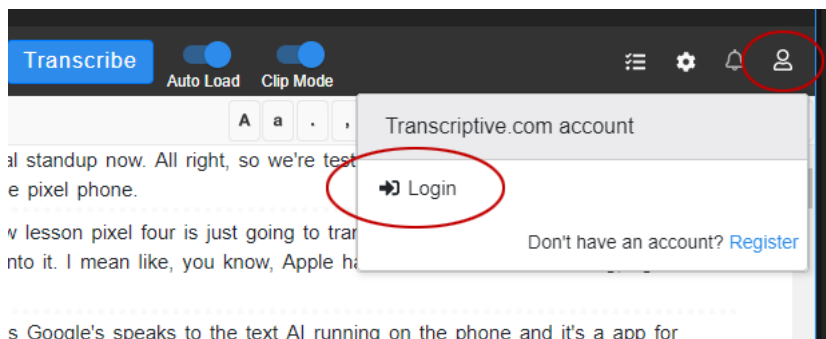
Just go to <https://app.transcriptive.com> and you'll see this screen:



Select 'create a New Transcriptive Account' and enter in your information. If you just intend to use the Premiere panel, select the 'Transcribe Only' free account. You can also select the 'Review Only' account, but this will not ask you for a credit card. Once you go through your 30 free minutes of transcription, you'll be unable to transcribe until you enter a credit card. So 'Transcribe Only' is best.

Once that's created, you'll be able to enter your credentials in the Premiere panel and you'll be good to go to transcribe!

To enter the credentials in the Premiere panel, go to the Account dropdown in the upper, right corner. Just click the Login button and put in your account info.



## Common Problems

### Slow Performance

There can be a lot of reasons for this but a couple of the main ones are 1) really long transcripts and 2) Adobe's NewWorld javascript engine.

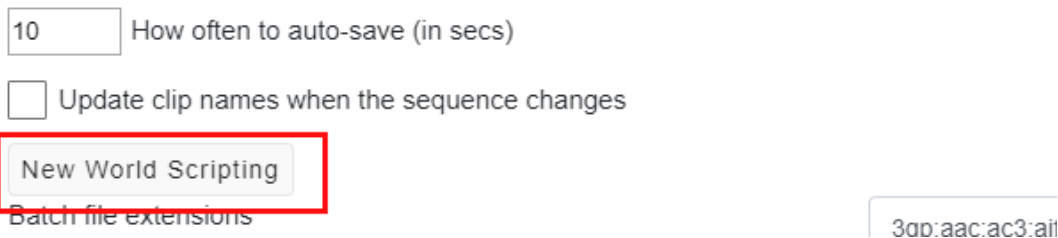
**Really Long Transcripts:** On the surface, the transcripts just look like text. However, in Transcriptive, every word has timecode and a bunch of other metadata attached to it. A two or three hour transcript can bog Premiere down. Especially if there are a lot of individual sentences. Sometimes this is unavoidable (i.e. different speakers), but sometimes the A.I. will put each sentence on a different line for no good reason.

When you transcribe, you should have 'Combine lines into paragraphs' checked. This will group sentences spoken by the same speaker into paragraphs. Much more memory efficient, resulting in better performance.

**Adobe's New World:** Adobe added a new javascript engine to Premiere in 2019. This is supposedly better than the old engine, but New World is buggy in some instances and Adobe seems to be in no hurry to fix it. Kind of frustrating for everyone.

The big issue is that it can cause slow downs when switching between clips. So if you're trying to use Transcriptive to create Selects and switching between lots of clips, there can be a significant delay loading the new clip. Not a big deal for one clip but it gets really annoying if you're rapidly trying to view a bunch of clips.

**You can turn New World off...** This will speed things up considerably. The downside is that some of Premiere's built-in panels don't work with it off. So if you turn it off, the Premiere Home Screen won't show up (the splash screen that appears when you launch PPro that shows your recent projects). Also some newer panels, like the Text panel, don't work. Most things work fine with it off, but keep an eye open for panels that don't open. You can turn it off by going to Transcriptive Main Menu>Preferences and clicking the New World button. You can turn it On or Off, but after doing so, you'll need to restart Premiere.



### Entering a Credit Card

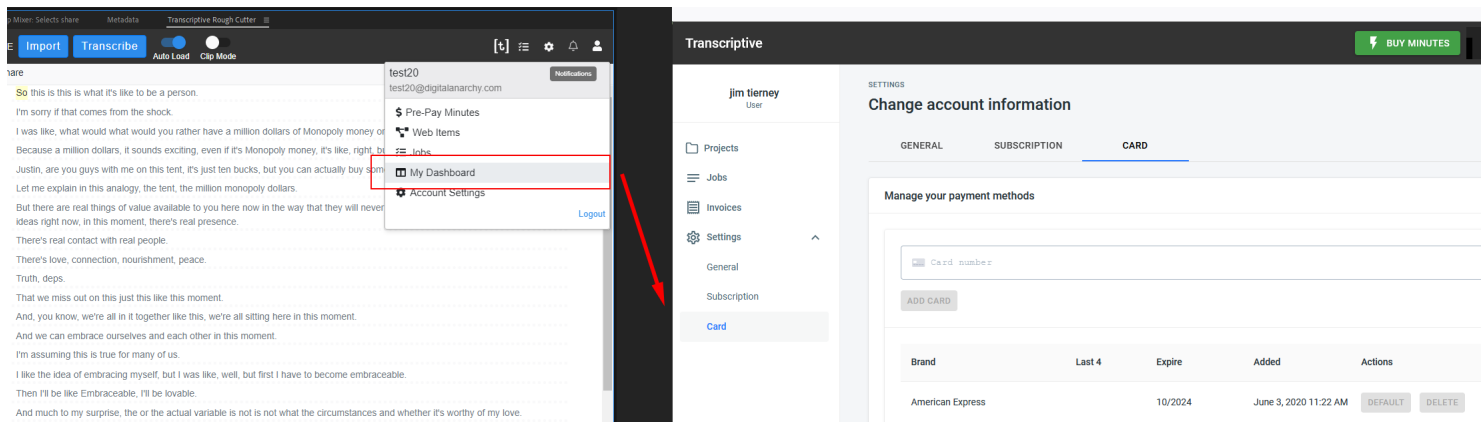
If you've create a Trial Account or a Review Only account, you may not have been asked for a credit card. Not a problem if you haven't used your free minutes, but after those run out, you'll need to add

# Transcriptive: Install & Requirements [t]ranscriptive rough cutter

a credit card to your account in order to transcribe anything.

To do so, go to the Account menu in the Premiere panel and click 'My Dashboard'.

This will take you to Transcriptive.com, where you'll need to login. Then go to Settings and select 'Card'. You can then enter in any Visa, MasterCard, Amex, or Discovery card number. You'll be all set and can start transcribing!



## What's New in Transcriptive Rough Cutter

### Transcriptive Rough Cutter : The next evolution of text based video editing

Technically this is Transcriptive 3.0 but we're moving away from the emphasis on transcription and focusing on the features that enable you to use the transcripts as part of your editing workflow. There are a lot of great new features and improvements to help you make the most of transcripts, no matter where you get them from. As such, we're renaming it to Transcriptive Rough Cutter.

### New Features

There are essential five big changes/improvements:

**Rough Cut & Selects:** Rough Cut will take an edited transcript and create a sequence with edits where deleted or struckthrough text is. It's a great way to quickly assemble a starting sequence. The Selects workflow lets you use PowerSearch and the ability to set In/Out points in a transcript to easily find soundbites and insert them into a sequence.

**Batch Transcribing:** Batch Project is much easier to use and intuitive and Alignment can now be batched.

**Alignment:** As mentioned you can now do Batch Alignments, but the Alignment feature has been improved and even more critical now that you get transcripts from so many services, including Adobe's new service.

**Sharing:** This is now easier to use and, hopefully, more intuitive. It's mostly cosmetic changes but there have been small improvements to some things in the panel, as well as the web version of Transcriptive at <https://app.transcriptive.com>.

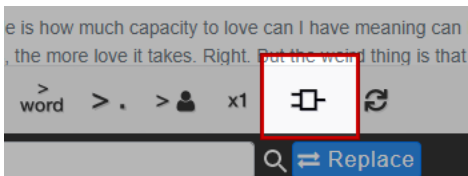
**Integration:** A lot of the reason for the above changes was to tie the features together better. We've been slowly adding features over the last two years and Transcriptive Rough Cutter is what we've been aiming for. It's not just the features, it's how they integrate. The Rough Cut feature was the big missing piece and with that, a lot of the other features become more powerful.

For example:

- You can use alignment to sync imported transcripts (from Adobe, Rev, etc) to your audio
- Use Clip Mode to set In/Out points and drop Selects into your master timeline
- Send the transcript created from those Selects to a Producer for additional edits or they can add comments
- They can send that back to you and you can create a rough cut based on their deletions or comments.



## Rough Cut



Rough Cut allows you to edit a transcript, either in Premiere or on Transcriptive.com, and have Transcriptive create an edited sequence in Premiere. The edits in the sequence will match the edits in the transcript, creating an instant rough cut or assembly.

This is at the heart of Transcriptive Rough Cutter and the big change from Transcriptive 2.0.

It's also different than the Transcriptive Selects workflow, which is explained on the next page.

### Clip or Sequence?

The edited transcript can come from either a clip or a sequence with a single or multiple clips.

The process is:

- You transcribe the clip or sequence
- You then edit the transcript in Premiere or send it to a colleague to edit in Premiere or on Transcriptive.com. **We recommend removing lines with the new Strikethrough feature** (see below)
- If you send it to a colleague, they can send it back to you once they're done.
- No matter where you edit it or who edits it, you never lose the timecode associated with each word, the speakers, or the ability to search and play it back. It behaves the same as any other transcript in Transcriptive.
- Once the transcript is edited, click the Rough Cut button and Transcriptive will assemble a rough cut from the transcript.

There are some limits to the Rough Cut feature. You can only delete/strikethrough text and add comments, you can't rearrange the text blocks (basically a limit of the Premiere panel API). Once the rough cut sequence is created, you can rearrange things in your timeline. To sync the transcript to the re-arranged timeline, select Main Menu > Sync Transcript to Sequence Edit. This will re-generate the transcript based on your edits.

Also, if you have a very complex sequence, it may fail. It works most reliably on sequences that only have the video/audio of the original footage. Don't add sound effects, b-roll, titles, color correction, etc. Rough Cut may or may not manage all those elements correctly when the new sequence is assembled.

## Editing/Correcting The Text

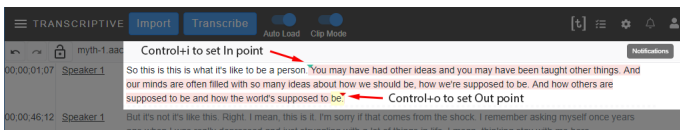
If you clean up the transcript while you're striking-through text for the rough cut, you'll need to Export>Speech Analysis before clicking the Rough Cut button. That will save the changes to the text you've made. If you don't do this, the rough cut will use the original transcript, not the cleaned up one.

Generally we recommend cleaning up the transcript at the end. The A.I. services are very accurate, but they aren't perfect. So some clean-up is usually needed. But instead of cleaning up the entire transcript, wait until you're reasonably sure what you're going to use and what you're going to throw away. It'll cut down on the cleanup time.

## Transcriptive Selects: Creating A Rough Cut with Selects

This is another method of creating a rough cut or assembly.

In Clip Mode you can set In/Out points (Control + i / o) and insert (control + 8 or control + ,) them to a master sequence. Starting the assembly process by grabbing soundbites from many different clips. The text between the In/Out points will be highlighted, this is a new feature and makes it much easier to see what's selected.

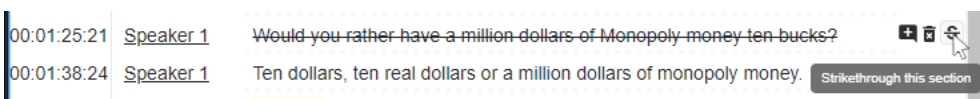


We've also improved how setting in/out points work. The green and red arrows should now always stay visible. But the highlight is the big improvement.

You can then rearrange them in your sequence timeline and re-generate the transcript in Transcriptive by going to Main Menu > Sync Transcript to Sequence Edit. The newly created transcript will reflect the new timeline. Unfortunately, due to limitations in Premiere we can't do this automatically. **We don't know what's going on in the timeline until you tell us to check.**

Of course, with the Rough Cut feature you can assemble things and send it to someone else to make additional edits.

## Strikethrough



What if you want to delete something from the transcript for the rough cut, but you still want

that text to show up in the original clip or sequence? Use Strikethrough!

By using Strikethrough you can still see the entire transcript. This is important because the original, uncut footage should have a pristine transcript attached to it. If you permanently delete parts of the transcript, it no longer matches the dialog of the uncut footage. So if you're creating a trailer and permanently delete some of the transcript, you'll need to re-transcribe when you use the same footage for the movie.

One other huge advantage for Strikethrough is that the text is still searchable. In the screenshot above, if I do a search for 'million', you'll still be able to find it if you use Strikethrough. If that line just gets deleted, it's gone and won't be searched. So Strikethrough allows you to still find something even if you accidentally struck out the wrong line/take/etc. Or the director suddenly goes "Why aren't we using that other take? I loved that other take!"

To Strikethrough a line, just click on the S icon at the far right of the Transcriptive UI. You can only Strikethrough entire lines, not individual words. If you want to just Strikethrough a few words, you'll need to split (Cmd/Alt+Shift+Down Arrow) the line/paragraph so the few words are on their own line.

## Sharing

We're making the process of sharing transcripts and video more intuitive and easy. Mostly what is changing is the UI and some behind the scenes stuff. The Transcriptive Web App (Transcriptive.com) gives you a powerful way of sharing the transcript/video for review or to have someone else edit it.

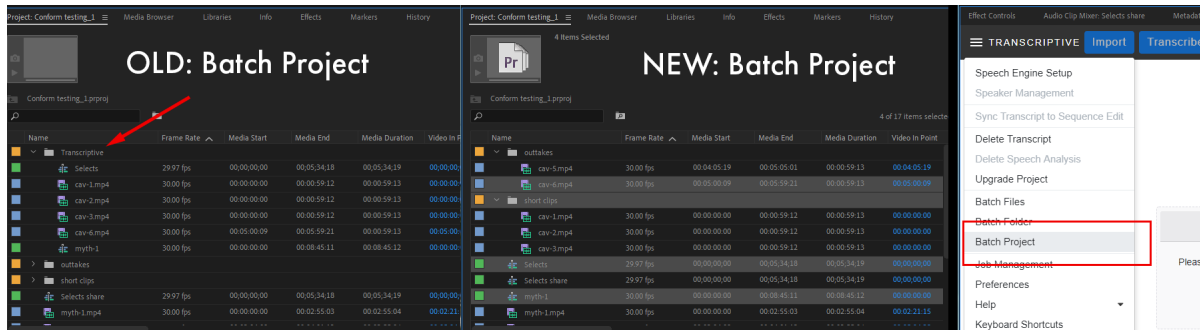
The ability to have someone else correct the transcript, delete or strikethrough words or paragraphs, and add comments is a critical piece of Transcriptive Rough Cutter. So we wanted to make that more intuitive and easier to use than it currently is. It works fine as it is, but we've heard from users that it's confusing and there's a steeper learning curve than there should be. Hopefully that will be much improved in this version.

The Transcriptive Web App is really meant to be a complement to the Premiere panel. As a standalone website, we realize it's a bit lackluster. But when combined with the Premiere panel, it's a pretty powerful way of collaborating!

We designed Transcriptive Web assuming anyone using it would be collaborating with someone using the Premiere panel. It was important to us that the UI be more or less than same and, most importantly, that sharing transcript data was completely lossless when going back and forth between Premiere and Transcriptive.com. This is what allows you to make edits on the web, create rough cuts in Premiere and constantly go back and forth.

For an in-depth demonstration, we recommend watching this tutorial video:  
<https://youtu.be/CHkcdawxYuo>

## Batch Transcription Improvements - Including Alignment



Batch processing is getting a big upgrade! There are three important changes:

**Batch Project:** You can now select any clip or sequence in the Project panel to be batch transcribed! Currently everything has to be in a Transcriptive bin (see above image). That requirement is now removed and you can just Shift + Click media, sequences or entire bins in the Project panel. You no longer have to re-arrange your Project panel just to batch transcribe a large number of items. Just Shift+Click to select multiple items or Bins and select Batch Project from the Transcriptive menu!

It's a much more intuitive way of batch transcribing.

**Parallel Processing:** Multiple files will be submitted at the same time. This makes batch processing much faster. Currently we do them one by one which creates a bottleneck and can tie up Transcriptive for quite a while. This should speed the process up significantly.

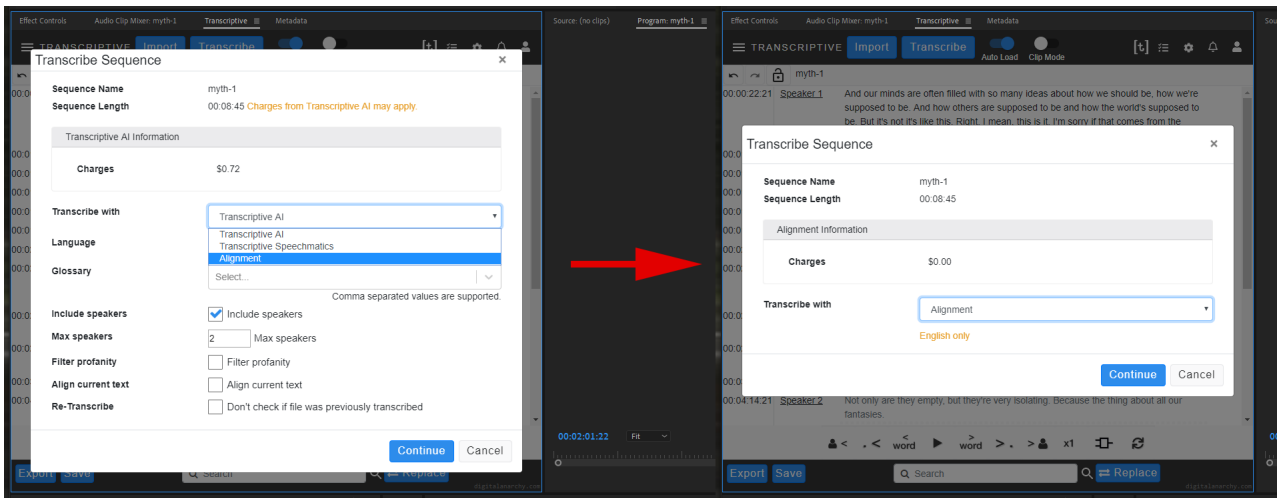
**Batch Alignment:** You can now use Batch Project to batch align clips or sequences that have imported transcripts and need to be aligned. This is a big deal, as alignment takes 2-4x longer than regular transcribing. You no longer have to wait around for one to finish before starting the next one. **The clips/sequences need to have the transcript imported first.** So there is some setup involved. But once that's done, just use Batch Project to align all of them! More details below...

### Alignment

Before you can Batch Project for alignment, all the clips and sequences need to be set up properly. You must import an existing transcript, usually a plain text or SRT file, for EACH clip or sequence. Once this is done for every one that you want to Align, you can select the clips/

sequences in your Project panel and select Batch Project.

Alignment only works with Batch Project due to the requirement of manually connecting the existing transcript to the video. You have to set that up in Premiere and Batch Files and Batch Folders look outside of Premiere. So Batch Project is what you need to use. For an in-depth demonstration of this, please check out this tutorial video: <https://youtu.be/SaRpvJY77zw>



Before you can Batch for alignment, all the clips and sequences need to be set up properly. You must import an existing transcript, usually a plain text or SRT file, for EACH clip or sequence. Once this is done for every one that you want to Align, you can select the clips/sequences in your Project panel and select Batch Project.

Alignment only works with Batch Project due to the requirement of manually connecting the existing transcript to the video. You have to set that up in Premiere and Batch Files and Batch Folders look outside of Premiere. So Batch Project is what you need to use.

Once Batch Project has confirmed each video has a transcript, you'll then get the Transcribe dialog. Change 'Transcribe With' to Alignment. This uses the free, offline alignment. However, this only works for English. For other languages, you can select Speechmatics and click the Align checkbox. There is a .04/min cost for this service.

## PowerSearch Improvements

PowerSearch has been included free with Transcriptive since v2.0. Your serial number will activate it and you can download it from our Demos page. It's currently in beta, but we're pretty close to releasing it. Definitely download it and check it out.

We significantly rewrote it to make it faster and more efficient at handling large numbers of results. It'll basically search all your transcripts as well as any markers in your project. If you're hunting around for where something was said, PowerSearch is a real lifesaver.

### What is PowerSearch?

PowerSearch aims to be Google for your Premiere project. A search engine that can find anything. We index everything in your project (this can take a several minutes when you first launch PowerSearch) and that allows us to easily search any metadata attached to your clips, markers in sequences or transcripts in Transcriptive.

It'll save you hours of time looking for things. You no longer have to scrub through footage looking for the clip where "that guy, said that thing about the Anarchist". Do a search for "Anarchist" and everywhere that shows up in clips, sequences or markers will get displayed to you like search results in any search engine. Click on a search result and open that clip or sequence right to where the search term was said. It's pretty amazing.

Detailed info about it is towards the end of this manual, after the Transcriptive content.

### Performance improvements with long transcripts

Sometimes the speech services will return transcripts with a lot of individual sentences. Usually this isn't a problem, but when a video/sequence is two, three or more hours long, all those sentences take up a lot of memory. This slows Transcriptive down when dealing with very long transcripts. It's particularly a problem with the way Speechmatics gives us back results. This can happen with Transcriptive-A.I. as well, but it's a more common problem with Speechmatics.

We now do a better job of combining those sentences into paragraphs. If you're using Speechmatics for very long transcripts, you should see a very noticeable performance increase.

### Better Support for Productions & Multicam

Adobe added the Productions feature in 2020. We've fixed a number of bugs related to Productions, so Transcriptive should work much better with it. We've also improved Multicam support.

### Preference to turn off auto-caps/punc when splitting line (for captions)

This new preference is ideal for massaging a transcript for use as captions. Usually when you

split a line Transcriptive adds a period to the end of one line and capitalizes the word at the start of the new line. If you're doing this for captions, that's not what you want. This new preference let's you turn that off.

### Duplicate transcript prevention

A lot of new users don't realize that there's a delay in transcribing. They submit the same file multiple times as a result. We have a new system on the backend that identifies these duplicates and prevents them from going through. That way you don't pay twice for same transcript!

This is also useful in case of an internet hiccup or failure where you don't get the transcript back.

That's mostly it for new features. There are, of course, many other bug fixes and little tweaks as well. It's a pretty big upgrade from 2.0.